



SHRADDHA
ANALYTICAL SERVICES
Serving The Industry Since Last 22 Years

Gas Chromatography - Head space sampler

Sample Requirement :-

1. Solid Sample - 10 gms.
2. Liquid Sample - 10 ml.

Applications :-

1. Residual Solvent Analysis.
2. Method Validation



Agilent Technologies GC 7820A - Head space sampler 7697A



- DR. KETAN MERCHANT [MSc., Ph.D - ICT]

Send your Enquiries



saslab21@gmail.com
info@saslabindia.com

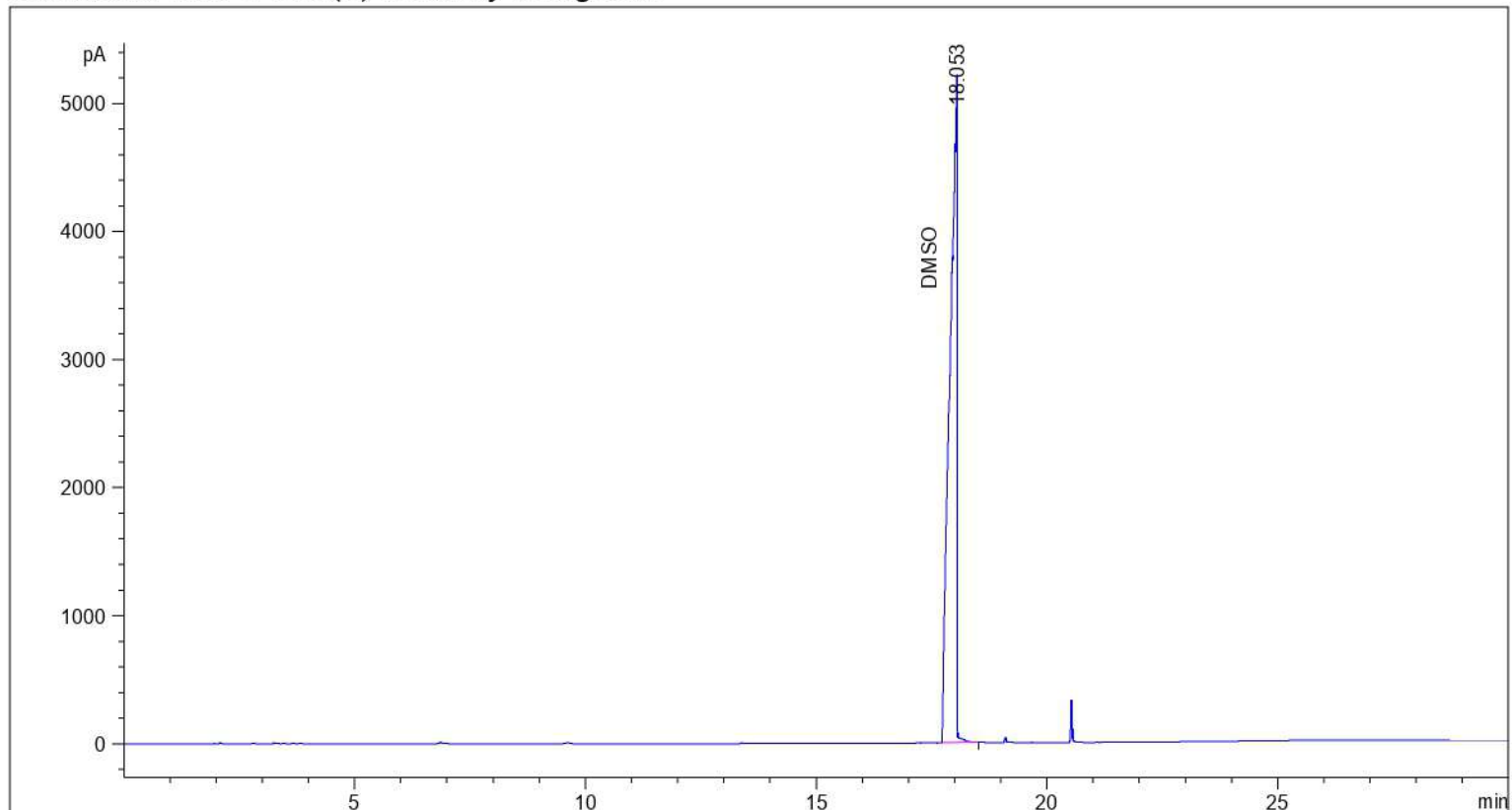


www.saslabindia.com



+91 8850413449
+91 022 2500 0186
+91 022 2500 0386
+91 022 4215 0502

=====
Acq. Operator : administration
Sample Operator : administration
Acq. Instrument : GC_7820_HSS Location : 3 (B)
Injection Date : 5/20/2022 3:58:10 PM
Inj Volume : 1000 µl
Acq. Method : D:\CHEM32\3\METHODS\SOLVENTS.M
Last changed : 5/20/2022 12:57:12 PM by administration
Analysis Method : D:\CHEM32\3\METHODS\SOLVENTS.M
Last changed : 5/20/2022 5:53:04 PM by administration
(modified after loading)
Additional Info : Peak(s) manually integrated



=====
Area Percent Report
=====

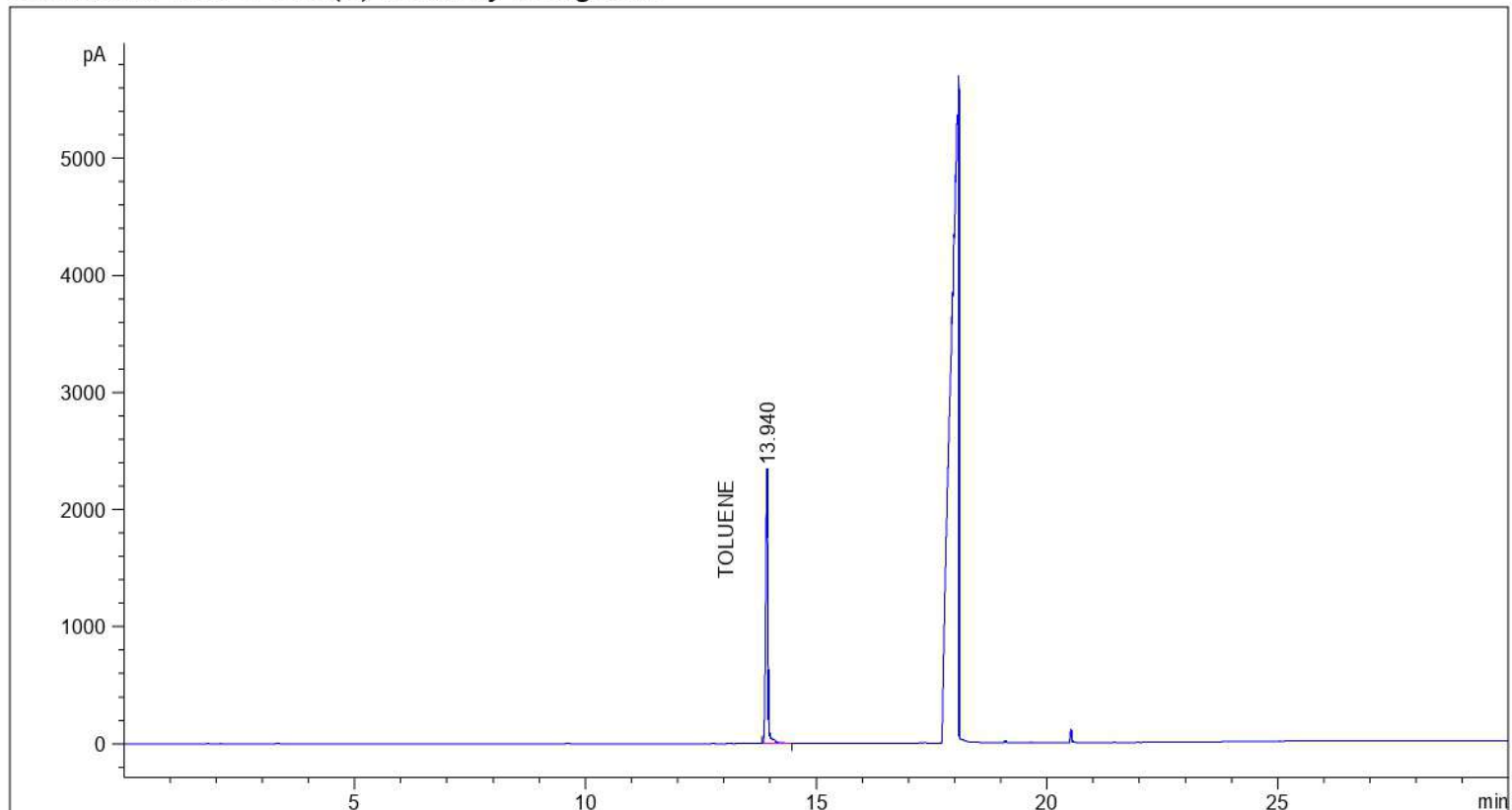
Sorted By : Signal
Calib. Data Modified : 5/20/2022 5:53:04 PM
Multiplier : 1.0000
Dilution : 1.0000
Use Multiplier & Dilution Factor with ISTDs

Signal 1: FID1 B, Back Signal

Peak #	RetTime [min]	Type	Width [min]	Area [pA*s]	Area %	Name
1	18.053	BB	0.1268	5.51407e4	1.000e2	DMSO

Totals : 5.51407e4

=====
Acq. Operator : adminstration
Sample Operator : adminstration
Acq. Instrument : GC_7820_HSS Location : 3 (B)
Injection Date : 5/20/2022 4:54:23 PM
Inj Volume : 1000 µl
Acq. Method : D:\CHEM32\3\METHODS\SOLVENTS.M
Last changed : 5/20/2022 12:57:12 PM by adminstration
Analysis Method : D:\CHEM32\3\METHODS\SOLVENTS.M
Last changed : 5/20/2022 5:54:23 PM by adminstration
(modified after loading)
Additional Info : Peak(s) manually integrated



=====
Area Percent Report
=====

Sorted By : Signal
Calib. Data Modified : 5/20/2022 5:54:23 PM
Multiplier : 1.0000
Dilution : 1.0000
Use Multiplier & Dilution Factor with ISTDs

Signal 1: FID1 B, Back Signal

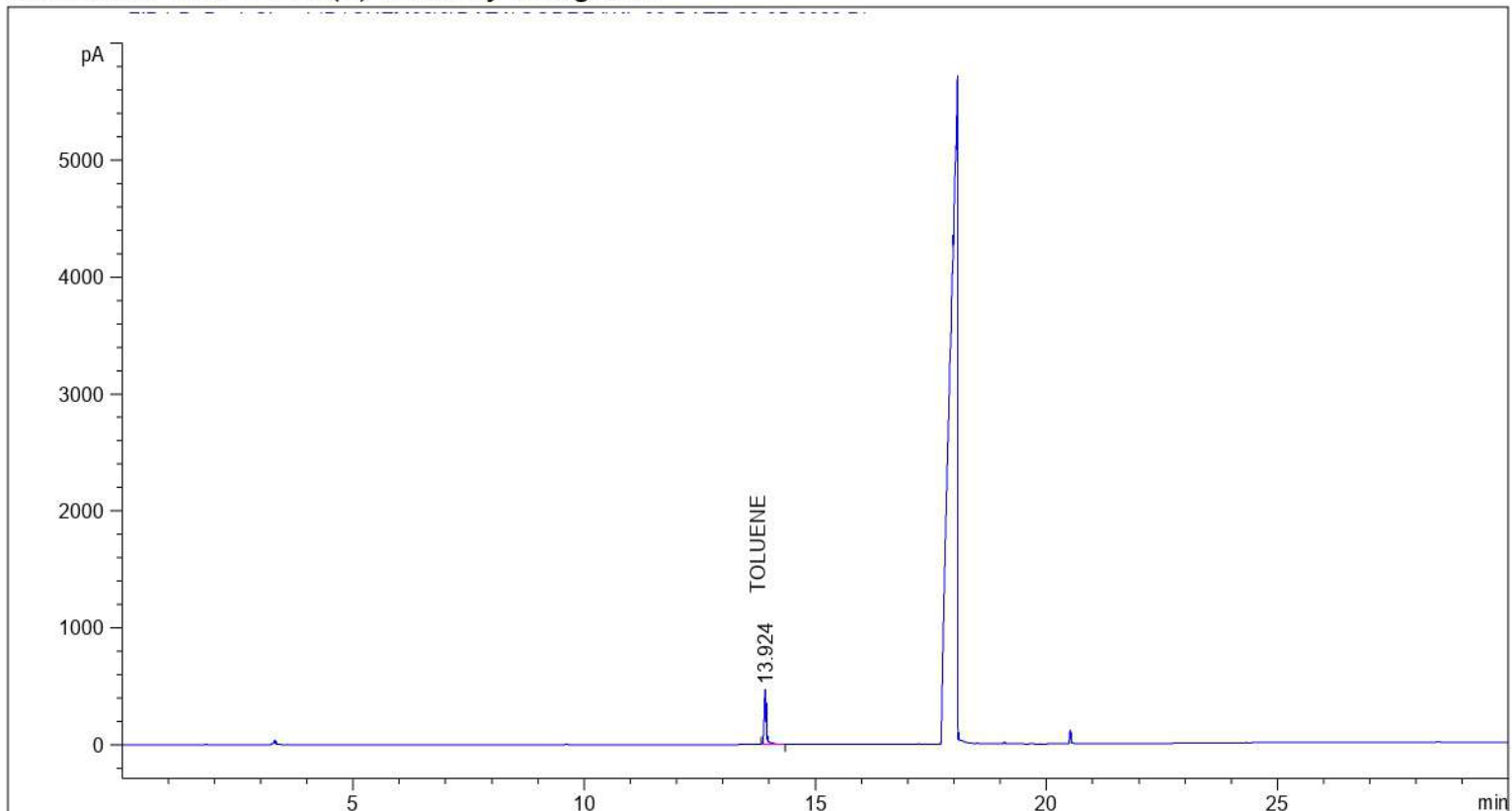
Peak #	RetTime [min]	Type	Width [min]	Area [pA*s]	Area %	Name
1	13.940	BV R	0.0483	7721.16113	1.000e2	TOLUENE

Totals : 7721.16113

```

=====
Acq. Operator   : adminstration
Sample Operator : adminstration
Acq. Instrument : GC_7820_HSS                Location : 3 (B)
Injection Date  : 5/20/2022 5:49:04 PM
                                           Inj Volume : 1000 µl

Acq. Method     : D:\CHEM32\3\METHODS\SOLVENTS.M
Last changed    : 5/20/2022 12:57:12 PM by adminstration
Analysis Method : D:\CHEM32\3\METHODS\SOLVENTS.M
Last changed    : 5/20/2022 6:22:33 PM by adminstration
                 (modified after loading)
Additional Info : Peak(s) manually integrated
    
```



=====
 Area Percent Report
 =====

```

Sorted By      : Signal
Calib. Data Modified : 5/20/2022 6:22:33 PM
Multiplier     : 1.0000
Dilution       : 1.0000
Use Multiplier & Dilution Factor with ISTDs
    
```

Signal 1: FID1 B, Back Signal

Peak #	RetTime [min]	Type	Width [min]	Area [pA*s]	Area %	Name
1	13.924	BB	0.0519	1647.35034	1.000e2	TOLUENE

Totals : 1647.35034